



**COUNTER  
TERRORISM  
POLICING**

National Counter  
Terrorism Security Office

# Roadmap to improved counter terrorism security and readiness



# Roadmap to improved counter terrorism security and readiness

## This tool will:

- Act as an introduction for those starting out on their CT security and readiness journey.
- Provide an interactive signpost to the key principles and initial supporting guidance required to take those initial steps.

This roadmap will help sites and organisations understand their vulnerabilities and start their journey to improve counter terrorism security and readiness. We want people to follow all the steps in the roadmap but what is proportionate and appropriate at each step will vary from setting to setting.

**If you are subject to The Terrorism (Protection of Premises) Act 2025, you should refer to the Section 27 statutory guidance to understand compliance with the legislation.**

### What is it we want you to do?

Use this process, engage with the guidance and apply it to your setting.

### Who is this for?

For all venues, premises and organisations.

### Why do you need to do this?

This easy-to-follow process will help you keep your organisation safer from acts of terrorism and wider crime.

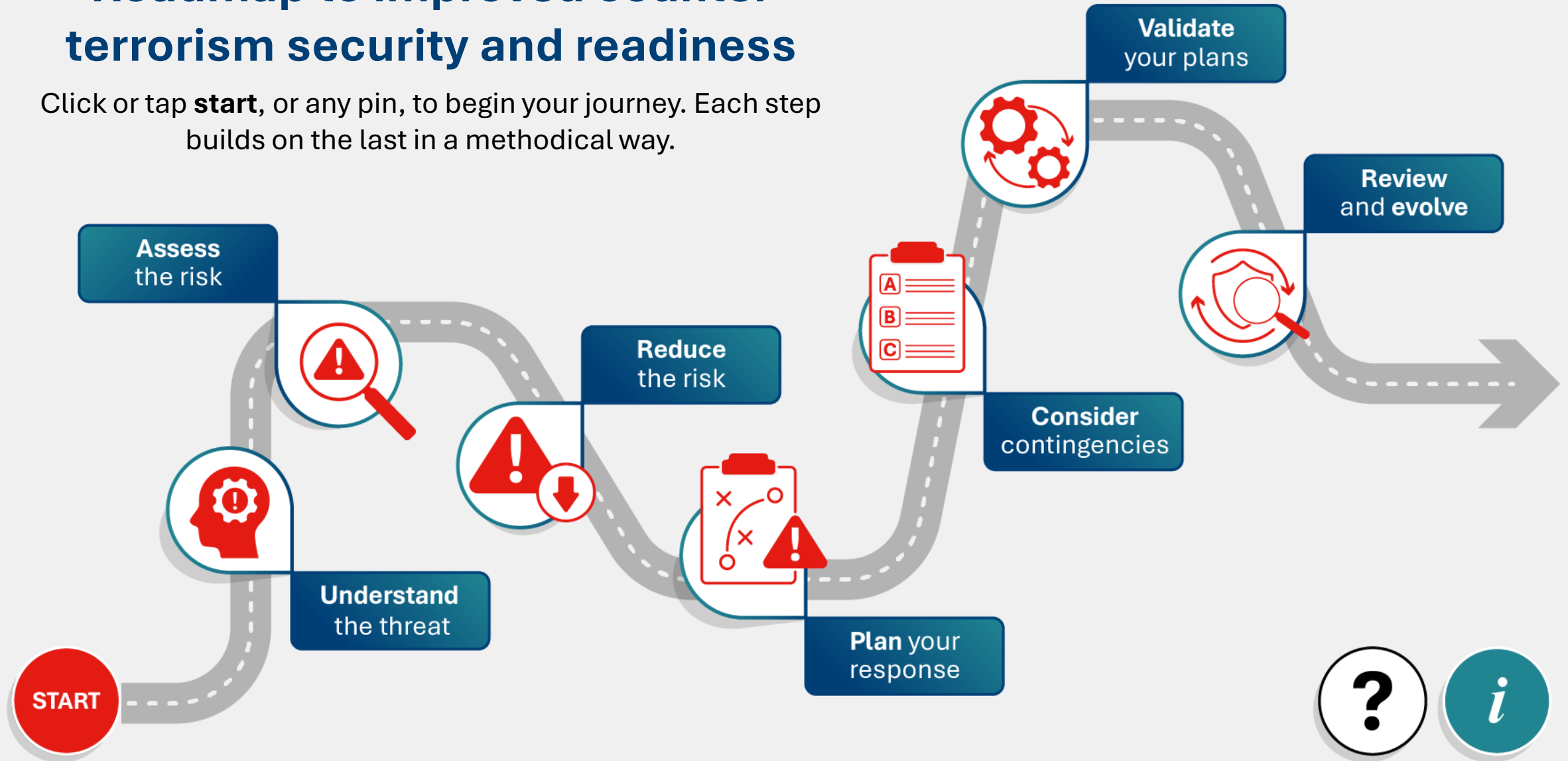
### How will you do it?

Start your journey by working through the process, considering each step, in context with your organisation according to its needs.



# Roadmap to improved counter terrorism security and readiness

Click or tap **start**, or any pin, to begin your journey. Each step builds on the last in a methodical way.





## Understand the threat

Recent events have shown that terrorist attacks can happen anywhere and at any time, including at your setting. To help make your setting safer you need to understand the current threats facing the UK.

Visit the [ProtectUK threat page](#) to better understand the current threat levels, the most likely attack types and where they are more likely to occur.





## Assess the risk

Now that you understand the most likely attack types, you can identify how vulnerable your setting may be to each of them. Assess the risks to your setting by considering likelihood of success and potential impact for each attack type, informed by your understanding of your setting's vulnerabilities.

Visit the [ProtectUK risk assessment tool](#), which is an easy-to-follow process written with the threat of terrorism in mind.



## Reduce the risk

The ProtectUK risk management tool comes with a comprehensive set of **risk management controls**. Start by considering organisational and procedural options, as these are typically low-cost. Proportionate additional measures may also be appropriate, dependent on your specific setting.

When countering the threat from terrorism, your people are your biggest asset. A simple measure could be for them to undertake **Action Counters Terrorism (ACT)** and **See Check and Notify (SCaN)** awareness / e-Learning products. These will help to raise their awareness of the threat and what they can do to help.

The **CT Crime Prevention Toolkit** is also available and will help you to prepare for, manage and recover from a criminal or terrorist incident.

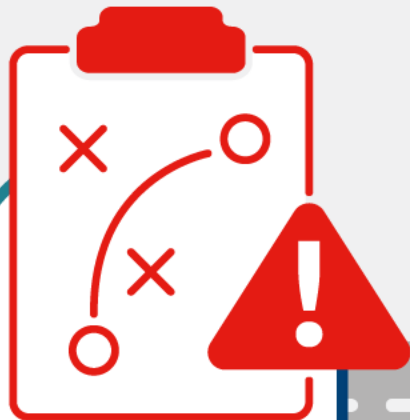


## Plan your response

All settings should have effective plans to protect their people and reduce the impact of terrorist incidents should they occur.

Your risk assessment will enable you to understand the plans that you need in place. This will include **evacuation, invacuation and lockdown**, managing **ingress and egress**, **communications plan** and working closely with **emergency services**.

Organisations also have a duty of care for people who visit their premises. The **Guide Shelter Report** guidance on ProtectUK can help your organisation understand how to perform this duty in a crisis and ensure your staff know how to respond effectively.



## Consider contingencies

The National Stakeholder Menu of Tactical Options outlines a range of proportionate contingency measures for you to consider at times of raised threat or in response to a terrorist incident.

It is important to consider these options in advance, so settings know what enhancements they might want to make to their security at times of greater threat when agility and flexibility might be critical.



## Validate your plans

To ensure your plans are fit for purpose and your people know what to do in the event of an attack, you should rehearse and practice them. Doing this will help provide confidence that your plans are effective and identify opportunities for improvement.

To support you, ProtectUK provides a freely available **ACT in a BOX** resource that can be completed collaboratively with your team. These exercises help those responsible to reflect on their own venue and work through how they might respond together to specific situations.

This may be one of a number of ways that you may wish to validate your plans. For further information on validating plans visit the **UK Resilience Academy**.





## Review and evolve

It is important to review risks regularly and stay informed about the current threat, as any changes may increase your vulnerability. To stay up to date with the latest advice and guidance, visit [ProtectUK](#). This will help ensure your plans are current and your organisation remains prepared and resilient.



# Further information

For more advice and guidance, please see the websites and information sources below.

## Understanding the threat

- [ProtectUK Threat page](#)

## Assessing and reducing the risk

- [ProtectUK risk assessment tool](#)

## Empowering your people

- [Action Counters Terrorism \(ACT\) eLearning](#)
- [See Check and Notify - SCaN for all](#)

## The Terrorism (Protection of Premises) Act 2025

- [ProtectUK Martyn's Law resources](#)
- [Section 27 statutory guidance](#)

## Emergency planning tools

- [CT Crime Toolkit](#)
- [Evacuation, invacuation and lockdown](#)
- [Ingress and egress planning](#)
- [Communications planning](#)
- [Working with the emergency services](#)
- [Guide Shelter Report](#)

## Contingency planning

- [National Stakeholder Menu of Tactical Options](#)

## Validating your plans

- [ACT in a BOX](#)
- [UK Resilience Academy](#)



## Other CT resources

[ProtectUK](#)

[National Protective Security Authority](#)